



A PULSE CHECK ON THE NEW DISTRIBUTED WORKFORCE



A SURVEY ON PREFERENCES,
COMMUNICATION AND PRODUCTIVITY
FOR THE NEW REMOTE EMPLOYEE

[CLICK HERE
TO VIEW RESULTS](#)





DEMOGRAPHICS

Total responses

1000

Age groups

23 - 54 (100.0%)

Country

United States, United Kingdom

Gender

Male (46.6%), Female (53.4%)

communicate
connect
engage

01 Have you moved to working from home from since the onset of the Coronavirus pandemic?

ANSWERS	ANSWERS (%)	COUNT
Yes	99.21%	992
No	0.79%	8

02 Would you like to work from home permanently?

ANSWERS	ANSWERS (%)	COUNT
Yes	52.20%	522
No	11.70%	117
I would prefer a mix of both	36.10%	361



03 Are you more or less positive about working from home since the pandemic?

ANSWERS	ANSWERS (%)	COUNT
More positive	84.90%	849
Less positive	15.10%	151

04 Would you like to return to working in the office?

ANSWERS	ANSWERS (%)	COUNT
Yes	46.40%	464
No	53.60%	536



05 Are you communicating with your colleagues more or less since working from home?

ANSWERS	ANSWERS (%)	COUNT
More communication	50.90%	509
Less communication	49.10%	491

06 Is your employer communicating with you more or less since the onset of the pandemic?

ANSWERS	ANSWERS (%)	COUNT
More communication	63.20%	632
Less communication	36.80%	368



07 Do you feel more or less productive working from home?

ANSWERS	ANSWERS (%)	COUNT
More productive	70.50%	705
Less productive	29.50%	295

08 Do you think there is more effort being put into communicating with employees now?

ANSWERS	ANSWERS (%)	COUNT
Yes	75.70%	757
No	24.30%	243



09 Do you approve of how your employer has treated you since working from home?

ANSWERS	ANSWERS (%)	COUNT
Yes	63.40%	634
No	7.60%	76
About the same	29.00%	290

10 What do you like most about working from home?

ANSWERS	ANSWERS (%)	COUNT
No commute	49.30%	493
Extra time in the morning	23.90%	239
Extra time in the evening for activities	9.10%	91
Spending less money out on coffee/ food/ transport	17.70%	177



11 If you were to work from home permanently, what would you miss the most?

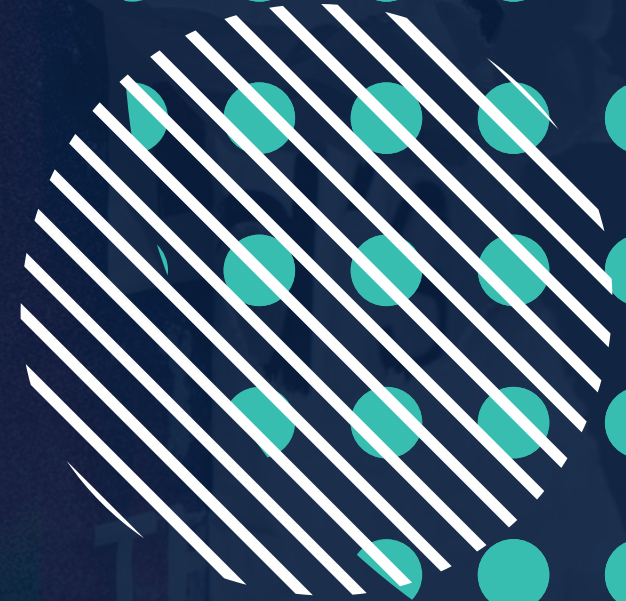
ANSWERS	ANSWERS (%)	COUNT
Meeting colleagues/friends	34.00%	340
Having dedicated work space	12.00%	120
Company culture	7.00%	70
Getting out of the house	23.20%	232
Defined working hours	4.30%	43
Having a separation of work/home life	19.50%	195

12 Now that working from home is an option for many companies, would it make you more or less likely to stay with your current organization longer?

ANSWERS	ANSWERS (%)	COUNT
More likely to stay	90.00%	900
Less likely to stay	10.00%	100



the communication platform for
your distributed workforce



workvivo.com